

DRAINAGE CELL

MODULAR HORIZONTAL DRAINAGE

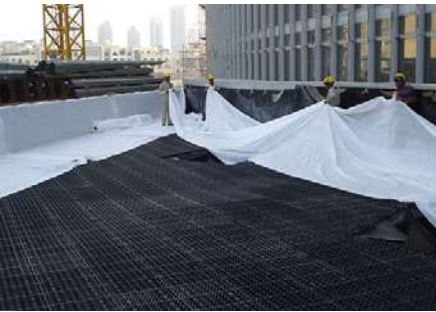
Roof gardens

Planter boxes

Podium landscaping

Sports fields

Civil works



Technical data

30mm drainage cell

Height	30mm
Width	500/1000mm
Length	500/1000mm
Weight	3kg/sqm
Surface void	>65%
Compressive strength	>80 t/m ²
Flow rate	>14400 litres/h/sqm @ 1% fall
Service temperature	-30c +120c
Material	Recycled polypropylene
Chemical properties	Unaffected by moulds and algae, soil-bourne chemicals and bacteria

50mm drainage cell

Height	50mm
Width	300/1000mm
Length	500/1200mm
Weight	6.5kg/sqm
Surface void	>90%
Compressive strength	>210 t/m ²
Flow rate	>19200 litres/h/sqm @ 1% fall
Service temperature	-30c +120c
Material	Recycled polypropylene
Chemical properties	Unaffected by moulds and algae, soil-bourne chemicals and bacteria

Installation procedure

1. Place the drainage cell over the surface of the membrane and butt together (interlocking is not required). For additional protection a layer of 3mm protection board is recommended under the drainage cell.
2. Cut the drainage cell where required using a hand or circular saw.
3. Place the filter fabric over the drainage cell allowing for a 150mm overlap at each seam. Allow for additional fabric to cushion the edges of the drainage cell around the perimeter against the waterproof membrane and walls.
4. Install the drainage cell vertically to the walls of the planter boxes if required and cover with filter fabric. Allow sufficient overlap to the horizontal sections.
5. Lay a 50-100mm layer of coarse washed river sand to act as a filtration layer over the fabric.
6. Lay the soil profile to the required depth. Please note that a minimum of 300mm of cover is required before allowing vehicles and machinery to traffic over the surface.

1. Waterproof membrane
2. Protection board
3. Drainage cell
4. Geotextile fabric
5. Coarse washed river sand
6. Soil mix
7. Outlet pipe
8. Planting/landscaping

